

The logo for ANAND, consisting of five colored squares (red, blue, yellow, purple, orange) each containing a white letter: A, N, A, N, D.

A N A N D

PUNE'S BEST

ANAND ENTERPRISES

**OVER 20 YEARS OF BEST
EXPERIENCE**

www.anandenterprisespune.in



CONTACT US

A N A N D



Phone No
+91 9372402947

Email Id
info@anandente
rprisespune.in

Email
www.anandent
erprises.in

Nade Complex, Survey No 64 1 | 2, Main
road, Kalewadi, Pune411017



Our vision & mission

At Anand Enterprises we deliver what we promise, deliver on time and have a quality that is appreciated by the customers. We notice that we are successful when our customers are happy and reclamations are minimum. Our mission is to deliver Polycarbonate Sheet and other products that can be used as an advantage.



Bonding with the Best

KNOWN FOR ITS HIGH-QUALITY AND LONG LASTING PANELS, GOODLUCK HAS BEEN AN UNDISPUTED LEADER IN SUPPLYING ALUMINIUM COMPOSITE PANELS ACROSS INDIA.



Customer Centric Approach

OUR STRATEGIES ARE ALIGNED WITH THE EXPECTATIONS OF OUR CUSTOMERS. OUR LINES ARE BUILT TO PROVIDE FLEXIBILITY TO OUR CUSTOMERS.



Teamwork

WE WORK TOGETHER , ACROSS THE BOUNDARIES ,TO MEET NEEDS OF OUR CUSTOMERS AND TO HELP THE COMPANY

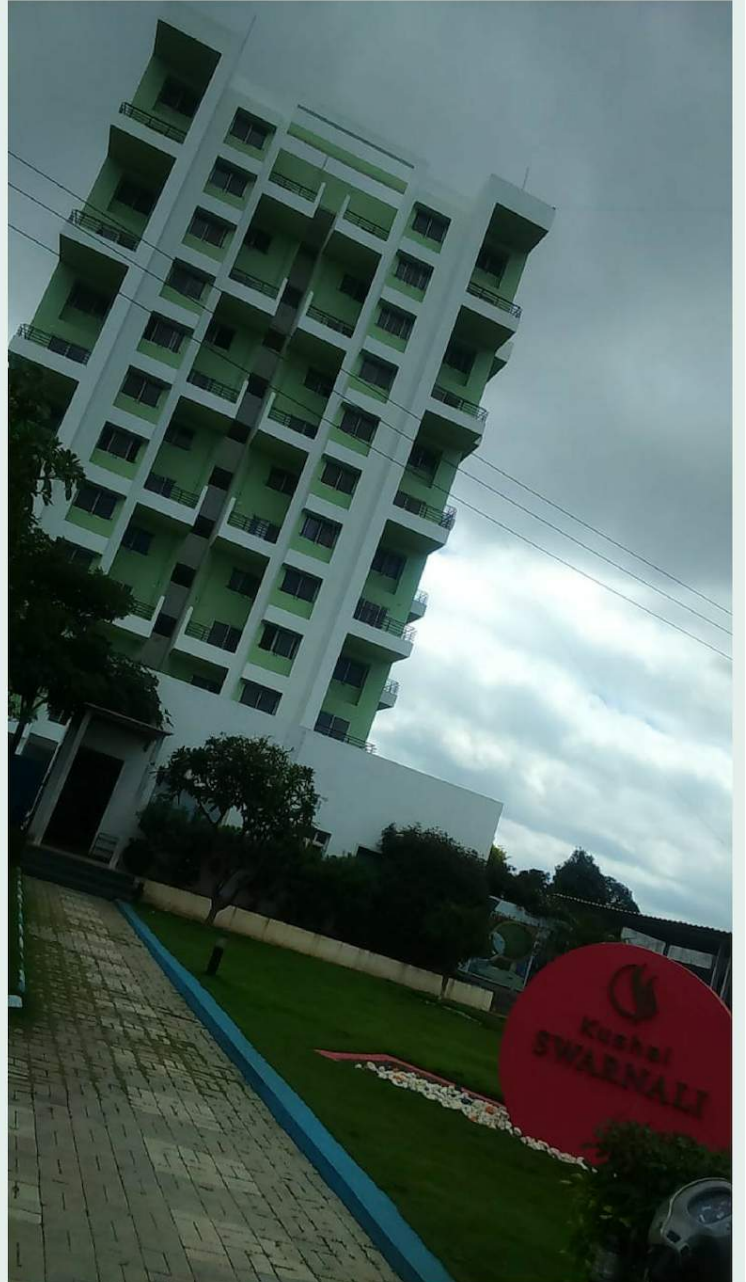


+91 9372402947

www.anandenterprisespune.in

info@anandenterprisespune.in

Our Feature Project
Kaushal Swarnali



+91 9372402947

www.anandenterprisespune.in

info@anandenterprisespune.in

Our Feature Projects



+91 9372402947

www.anandenterprisespune.in

info@anandenterprisespune.in

Feature Project

Kushal Adhiraj Associate



+91 9372402947

www.anandenterprisespune.in

info@anandenterprisespune.in

Feature Project SB Patil College



+91 9372402947

www.anandenterprisespune.in

info@anandenterprisespune.in

Feature Project

Millennium Engineers

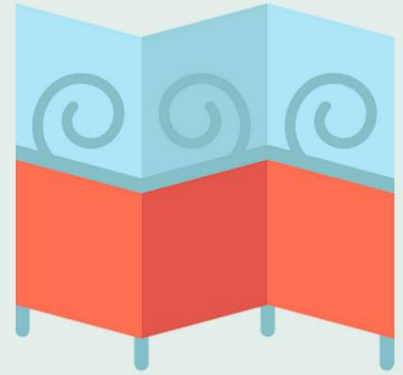


+91 9372402947

www.anandenterprisespune.in

info@anandenterprisespune.in

Partition Work



+91 9372402947

www.anandenterprisespune.in

info@anandenterprisespune.in

Feature Project Ceiling Work

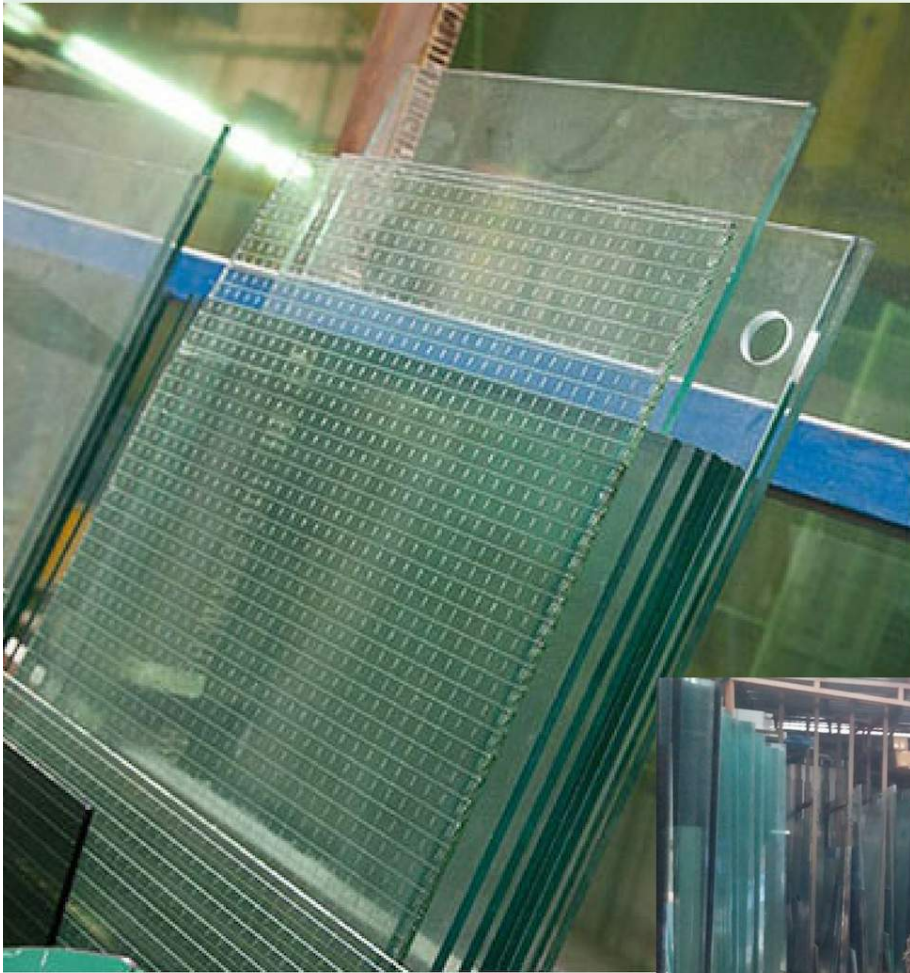


+91 9372402947

www.anandenterprisespune.in

info@anandenterprisespune.in

Our Warehouse



+91 9372402947

www.anandenterprisespune.in

info@anandenterprisespune.in

Our Warehouse



+91 9372402947

www.anandenterprisespune.in

info@anandenterprisespune.in



CONTACT US

A N A N D



Phone No
+91 9372402947

Email Id
info@anandente
rprisespune.in

Email
www.anandent
erprises.in

Nade Complex, Survey No 64 1 | 2, Main
road, Kalewadi, Pune411017



Our Services

All Types of Glass Supplies



All Types of Fabrication Works



All Hardware Equipment



+91 9372402947

www.anandenterprisespune.in

info@anandenterprisespune.in

Glass Supplies

(Glass types with HSN code)

Plain - 70051090

Mirror. - 70099100

Tinted. - 70051010

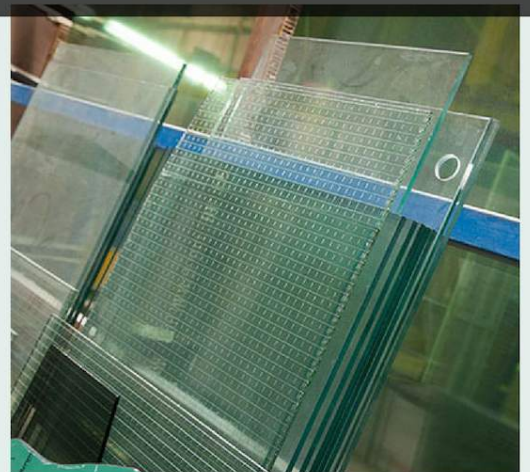
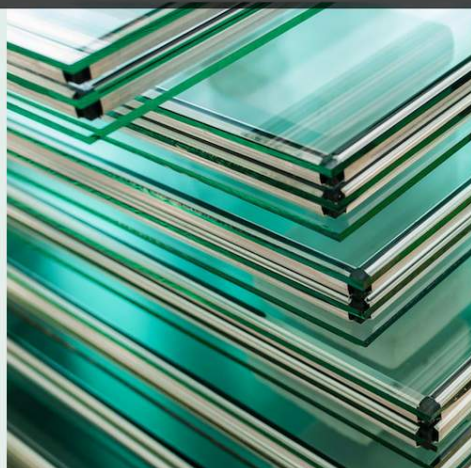
Oneway. - 70052990

Pin & White Figured - 70031290

Grey Figured - 70031210

Wire Glass - 70032090

Toughen. - 70071900



+91 9372402947

www.anandenterprisespune.in

info@anandenterprisespune.in

Glass For Offices

The Office and IT space is undergoing a radical change in terms of interior design and décor. Glass adds light, colour, aesthetics and texture and can be used for panelling & writing boards, lift lobbies & common areas, doors & partitions, furniture, flooring, mirrors and glass signages.

We offers a specially designed range of glass for office interiors. This includes coloured glass, textured glass, patterned glass, privacy glass, LED glass, transparent glass and LED free mirrors. Combining two or more of these products adds greatly to the aesthetics of office interior design.



+91 9372402947

www.anandenterprisespune.in

info@anandenterprisespune.in

Mirrors

Glass mirrors are an integral aspect of the interior applications' space. Over and above the utility factor, mirrors are a reflection of tastefully done interiors as well. We range of mirrors are known to be among the clearest all over the world. SGG mirrors are clearer, brighter, distortion-free and more durable than other mirrors in its class. In keeping with our commitment to the environment through sustainable products, the eco-friendly mirrors are manufactured with lead-free paint, very low Volatile Organic Compound (VOC) and formaldehyde.



+91 9372402947

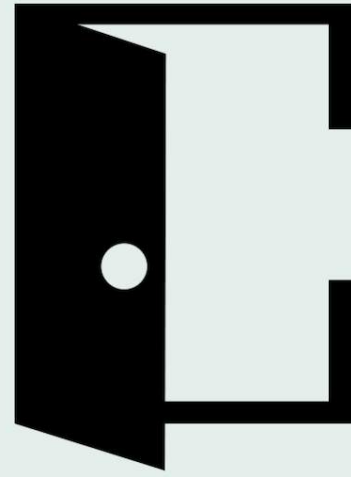
www.anandenterprisespune.in

info@anandenterprisespune.in

Doors and Partition

Glass Doors in offices create an atmosphere of space, brightness and transparency. Glass for office doors is the perfect material for a formal environment. Based on the interior décor of the office, the choice of glass can be made between classic or contemporary.

Glass Partitions bring a feeling of space and openness to office interiors. Innovative glass solutions that provide privacy are also suited for partitions.



+91 9372402947

www.anandenterprisespune.in

info@anandenterprisespune.in

Glass For Interiors

Glass adds style and sophistication to interior design. We have a wide range of glass for interiors in different textures and patterns. Choose from transparent, translucent and opaque glass to maximize space, improve natural light, protect privacy, ensure safety or enhance aesthetics.

We specially supply glass for interior design can be used for various applications across diverse segments – homes, offices, hotels & restaurants, commercial/retail spaces.



+91 9372402947

www.anandenterprisespune.in

info@anandenterprisespune.in

ACP-Classic Sparkle

Our ACP is a perfect substitute of natural wood and HPL and it is made with top and bottom layer of aluminium coil and core material is LDPE and top surface is coated with PVDF coating, which is excellent in exterior application with 10 year warranty and bottom coating is polyester base. Our HPL ACP is good durability, impact resistance, moisture resistance, dent resistance, heat resistance, and weather resistance.

Our HPL ACP is nil expansion and contraction so it can be installed without any gap in exterior as well interior application of the building. It is green building product its reduced energy uses in building and prevent our environment. For getting LEED certificate in any projects its contributes 2 LEED point.



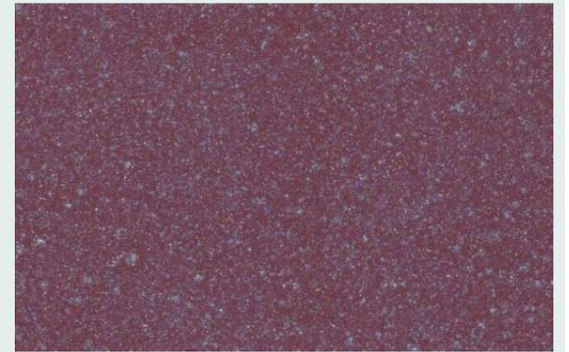
+91 9372402947

www.anandenterprisespune.in

info@anandenterprisespune.in

ACP – Glitter Series

Our ACP is a perfect substitute of natural wood and HPL and it is made with top and bottom layer of aluminium coil and core material is LDPE and top surface is coated with PVDF coating, which is excellent in exterior application with 10 year warranty and bottom coating is polyester base. Our HPL ACP is good durability, impact resistance, moisture resistance, dent resistance, heat resistance, and weather resistance.



+91 9372402947

www.anandenterprisespune.in

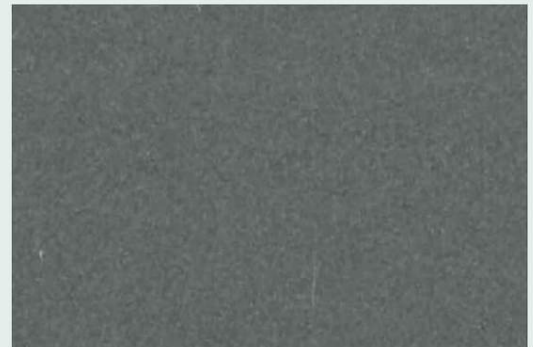
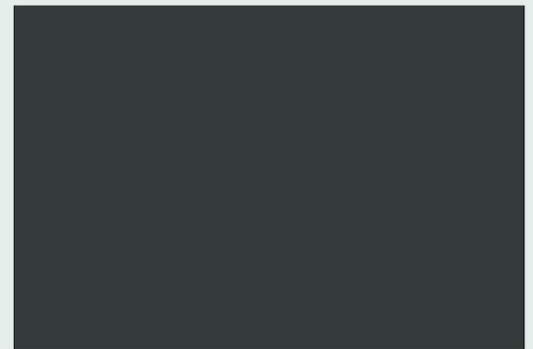
info@anandenterprisespune.in

ACP – Crystal

Ruff Series

Our ACP is a perfect substitute of natural wood and HPL and it is made with top and bottom layer of aluminium coil and core material is LDPE and top surface is coated with PVDF coating, which is excellent in exterior application with 10 year warranty and bottom coating is polyester base. Our HPL ACP is good durability, impact resistance, moisture resistance, dent resistance, heat resistance, and weather resistance.

Our HPL ACP is nil expansion and contraction so it can be install without any gap in exterior as well interior application of the building. It is green building product its reduced energy uses in building and prevent our environment. For getting LEED certificate in any projects its contributes 2 LEED point.



+91 9372402947

www.anandenterprisespune.in

info@anandenterprisespune.in



ACP – Premium Series

Our ACP Premium Series is a perfect substitute of natural wood and HPL and it is made with top and bottom layer of aluminium coil and core material is LDPE and top surface is coated with PVDF coating, which is excellent in exterior application with 10 year warranty and bottom coating is polyester base. Our ACP Premium Series is good durability, impact resistance, moisture resistance, dent resistance, heat resistance, and weather resistance.

Our HPL ACP is nil expansion and contraction so it can be install without any gap in exterior as well interior application of the building. It is green building product its reduced energy uses in building and prevent our environment. For getting LEED certificate in any projects its contributes 2 LEED point.



+91 9372402947

www.anandenterprisespune.in

info@anandenterprisespune.in

Our Partners



Asahi India Glass Ltd.



Masaheb !nfotech
Technology Partner



+91 9372402947

www.anandenterprisespune.in

info@anandenterprisespune.in



ANAND ENTERPRISES



TALK TO US

+91 9372402947

info@anandenterprisespune.in

www.anandenterprisespune.in

Office Address

Nade Complex, Sr no 64 |1|2, Shree Nagar
kalewadi main road, Pune 411017

